

BACeye Extensions for BACnet/SC MANUAL

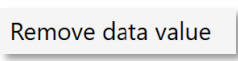


Content

1	Introduction	3
2	Safety	5
3	Classification and purpose	6
4	Network configuration	7
5	Creating snapshots	9
6	Examples with BACnet Rev. 22 capable devices.....	10
7	Product support.....	35

1 Introduction

Notation and symbols used

Notice	
The following notation and symbols are used in this manual.	
<p><Buttons></p>	<p>The notation <Button> is used for buttons that must be mentioned in the running text.</p>
	<p>Graphic symbols are also used for buttons where suitable.</p>
<p>Network commands as well as file and product names</p>	<p>Network commands, such as <i>tracert</i> or <i>ping</i>, are written in italics. The same applies to file and product names.</p>
<p>Menu names and paths</p>	<p>Menu functions are defined in the form: MAIN MENU / SUBMENU / ... to be localized.</p>
<p>Screenshots</p>	<p>The images used show the software running under a Microsoft Windows 10 installation.</p>

Licensing

Licensing requires a **product key**, which is provided with the purchase of the software.

Copyright protection

This document is protected by copyright. Reproduction, reprinting, even of extracts, as well as reproduction of the images, even in a modified state, is only permitted with the written consent of the manufacturer.

Warranty

This manual must be read carefully before installing and commissioning the software. The warranty entitlement lapses if the software is installed by untrained personnel.

Limitation of liability

All information and notes in this manual were compiled taking the applicable standards and regulations, best engineering practice and the manufacturer's extensive knowledge and experience into consideration.

The manufacturer assumes no liability for indirect and direct damage due to:

- Ignorance of this manual
- Improper use
- Use of untrained personnel
- Damage due to incorrect installation
- Unauthorised modifications to the software
- Use of non-approved components

The obligations agreed in the delivery contract, the general terms and conditions as well as the manufacturer's delivery conditions and the legal regulations applicable at the time of the conclusion of the contract apply.

Registered trademarks

Trademarks and product names of various companies will be used in this manual. These names are the registered trademarks of their respective manufacturers and will not be mentioned separately in this manual:

Microsoft Windows®

Is a registered trademark of the Microsoft Corporation.

BACnet und *ASHRAE*®

are registered trademarks of the American Society of Heating, Refrigerating and Air-Conditioning Engineers, INC. (ASHRAEi).

Target group

This manual is intended exclusively for specialist personnel who are familiar with network configuration in Ethernet and BACnet/SC.

Intended use

BACeye/SC is intended exclusively as a network explorer in BACnet networks.

2 Safety

General

The software itself does not pose any direct hazards. However, when used in BACnet networks, it is capable of severely disrupting the interaction of network components.



Warning

Misconfiguration of hardware and software!

Faulty configuration of hardware and software can cause malfunctions in the building infrastructure on network components, sensors or actuators, **for example:**

- Monitoring devices, such as fire alarm or intrusion detection systems, are deactivated.
- Machines and fans start up unexpectedly.
- Gate valves and other valves open or close unintentionally.

Under certain circumstances, this can lead to serious injuries or death.

The software should therefore only be used by qualified personnel who are familiar with the network configuration in Ethernet, BACnet/SC and other fieldbus systems!

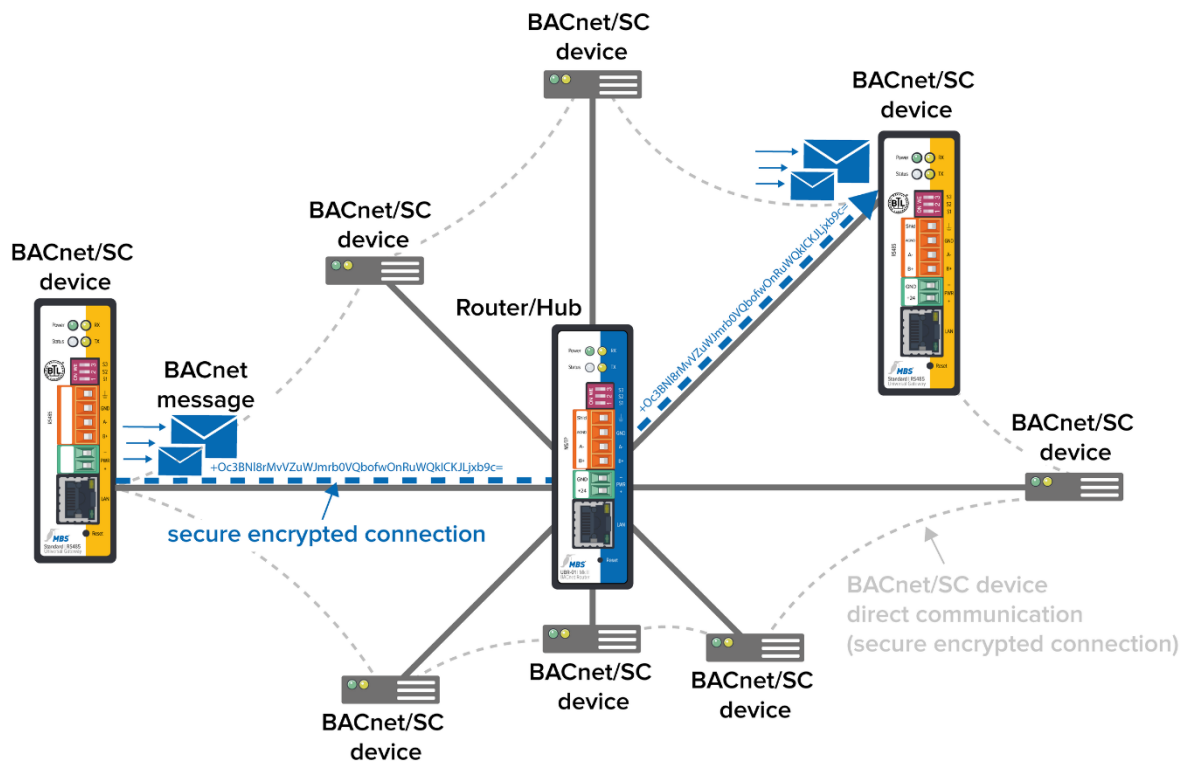
3 Classification and purpose

Classification BACeye/SC works on windows-based hardware platforms as a network explorer.

Purpose BACeye/SC is used as a network explorer for BACnet networks and can read and write to display and influence the behavior of devices in these networks.

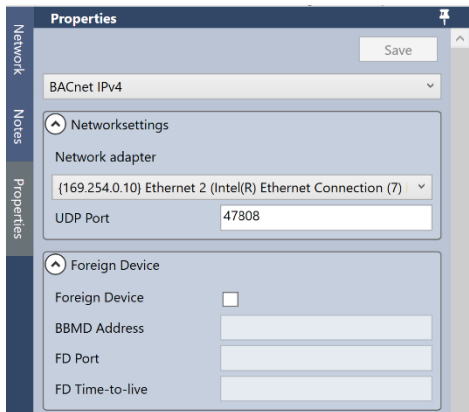
BACnet/SC extensions BACeye/SC also supports the standard for BACnet Secure Connect. BACeye/SC can thus visualize and control BACnet components that support BACnet up to **revision 22**.

Schematic structure of a typical BACnet/SC network



4 Network configuration

To operate BACeye in BACnet/SC environments, the network connection must first be configured accordingly. The following settings must be made in the <Properties> tab.



First, the appropriate network adapter must be selected.



After that, the configuration can be changed from BACnet IPv4 to <BACnet Secure Connect> can be changed.

This makes the following configuration parameters for BACnet/SC accessible.

Properties

Save

BACnet Secure Connect (SC)

Networksettings

VMAC address

Primary Hub URI

Failover Hub URI

CA Certificate Upload Delete

Certificate Upload Delete

Private Key Upload Delete

Alive check interval (sec) 30 30-300

Connect timeout (sec) 10 5-300

Reconnect delay (sec) 5 2-300

Reconnect retries 5 1-50

Connection max. lifetime (sec) 2880 10-2880

Use websocket ping

Accept selfsigned cert.

Accept invalid host cert.

Accept expired cert.

Accept SSL v2 connections

Accept SSL v3 connections

Accept TLS 1.0 connections

Accept TLS 1.1 connections

Accept TLS 1.2 connections

Accept any server cert.

Accept any client cert.

Server checks client cert.

less...

Secure Connect configuration parameters

Virtual MAC address
e.g. 00-80-41-ae-fd-7e

Primary Hub-URL
e.g.

Failover HUB-URL
e.g.

CA Certificate
e.g. Certificate of a Certificate Authority

Certificate
e.g. internal certificate of the organization

Private Key
e.g.

Interval for connection test (30-300)
e.g. 30 sec (default)

Connection-Timeout (5-300)
e.g. 10 sec (default)

Connection pause (2-300)
e.g. 5 (default)

Connection trials (1-50)
e.g. 5 (default)

Maximum connection time (10-2880)
e.g. 2880 sec (default)

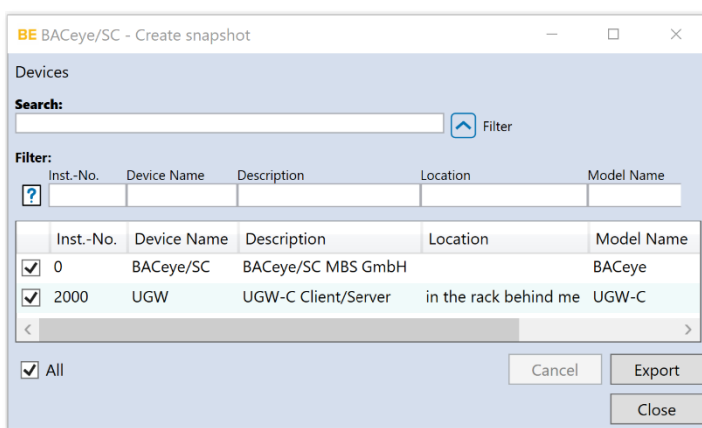
5 Create snapshots

General

In addition to the previous export functions of BACeye, BACeye/SC now also offers the possibility of taking snapshots of data points of the devices in the network and exporting them as an XML file.

Export snapshot

The selection window is called up via the menu items DATATRANSFER / SNAPSHOT...



After clicking <Export>, the selection of the location and the naming of the XML file is possible.

Clicking <Save> starts exporting the snapshot to an XML file.

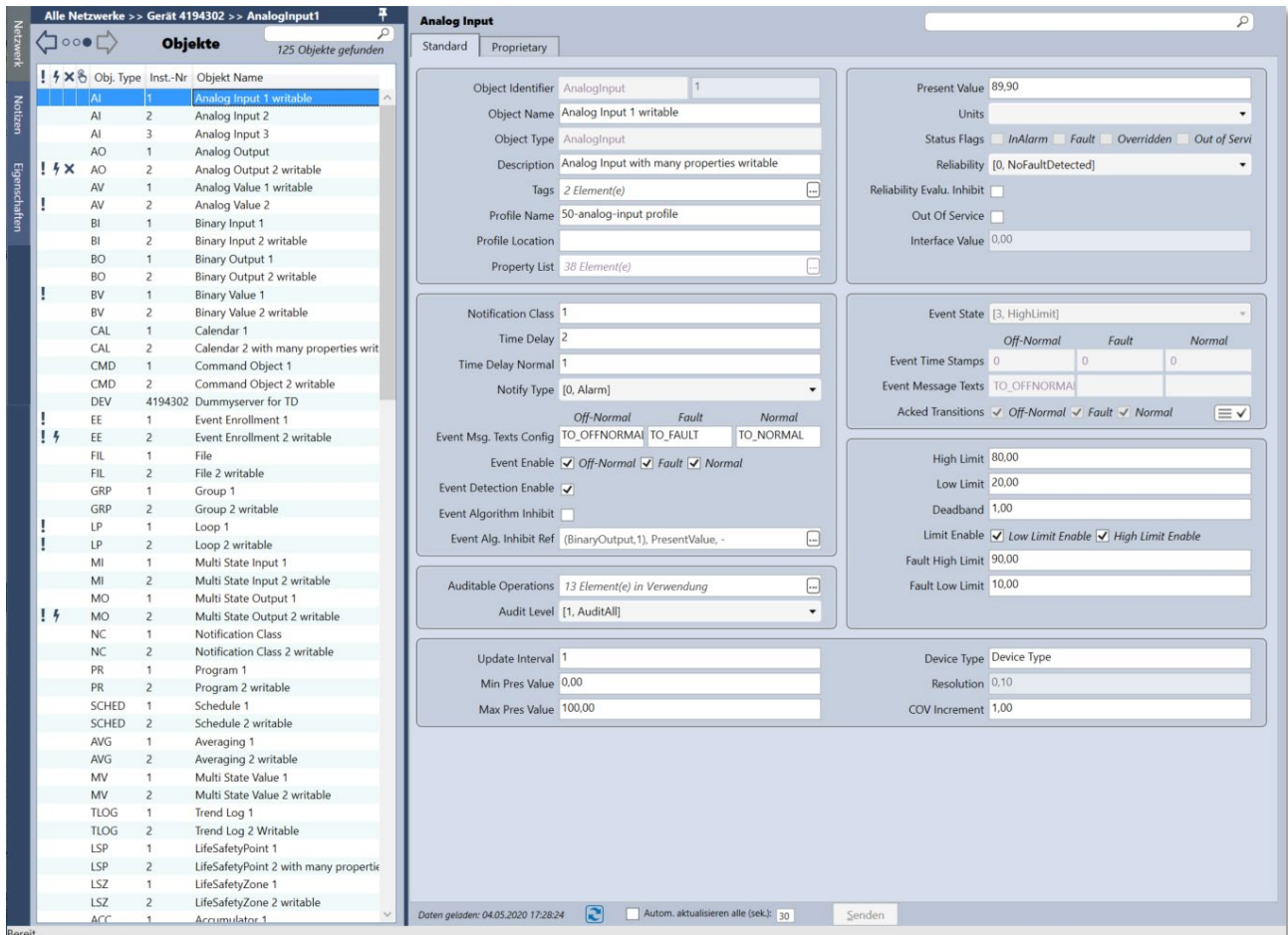
Extract from exported XML file

```
<?xml version="1.0" encoding="utf-8"?>
<BACeye.Snapshot Version="3.0.0.3" ExpectedVersion="2.0.3.25"
Id="6c5b0b3e-dbcf-4ae1-b1d0-08815270c0eb" Timestamp="23/12/2020
16:12:20">
<Snapshot.Devices>
  <Device Number="0" Name="BACeye/SC" Address="(0) C0A8021EBAC0">
    <Device.Objects>
      <Object Number="0" Type="Device" Name="BACeye/SC">
...

```

6 Examples with BACnet Rev. 22 capable devices

Object Type Analog Input (AI)



The screenshot displays the configuration window for an Analog Input (AI) object in the MBS software. The interface is divided into several sections:

- Objekte (Objects):** A list of 125 objects found, with 'Analog Input 1 writable' selected.
- Analog Input Configuration:**
 - Object Identifier:** AnalogInput 1
 - Object Name:** Analog Input 1 writable
 - Object Type:** AnalogInput
 - Description:** Analog Input with many properties writable
 - Tags:** 2 Element(e)
 - Profile Name:** 50-analog-input profile
 - Profile Location:**
 - Property List:** 38 Element(e)
- Present Value:** 89.90
- Status Flags:** InAlarm, Fault, Overridden, Out of Service
- Reliability:** [0, NoFaultDetected]
- Reliability Evalu. Inhibit:**
- Out Of Service:**
- Interface Value:** 0,00

Notification Class: 1

Time Delay: 2

Time Delay Normal: 1

Notify Type: [0, Alarm]

Event Msg. Texts Config: TO_OFFNORMAL, TO_FAULT, TO_NORMAL

Event Enable: Off-Normal, Fault, Normal

Event Detection Enable:

Event Alg. Inhibit Ref: (BinaryOutput,1), PresentValue, -

Auditable Operations: 13 Element(e) in Verwendung

Audit Level: [1, AuditAll]

Update Interval: 1

Min Pres Value: 0,00

Max Pres Value: 100,00

Device Type: Device Type

Resolution: 0,10

COV Increment: 1,00

Event State: [3, HighLimit]

Event Time Stamps: Off-Normal: 0, Fault: 0, Normal: 0

Event Message Texts: TO_OFFNORMAL

Acked Transitions: Off-Normal, Fault, Normal

High Limit: 80,00

Low Limit: 20,00

Deadband: 1,00

Limit Enable: Low Limit Enable, High Limit Enable

Fault High Limit: 90,00

Fault Low Limit: 10,00

Bottom status bar: Daten geladen: 04.05.2020 17:28:24 | Autom. aktualisieren alle (sek): 30 | Senden

Object Type Analog Output (AO)

Alle Netzwerke >> Gerät 4194302 >> AnalogOutput2

Objekte 125 Objekte gefunden

Obj. Type	Inst.-Nr	Objekt Name
AI	1	Analog Input 1 writable
AI	2	Analog Input 2
AI	3	Analog Input 3
AO	1	Analog Output
AO	2	Analog Output 2 writable
AV	1	Analog Value 1 writable
AV	2	Analog Value 2
BI	1	Binary Input 1
BI	2	Binary Input 2 writable
BO	1	Binary Output 1
BO	2	Binary Output 2 writable
BV	1	Binary Value 1
BV	2	Binary Value 2 writable
CAL	1	Calendar 1
CAL	2	Calendar 2 with many properties writ
CMD	1	Command Object 1
CMD	2	Command Object 2 writable
DEV	4194302	Dummyserver for TD
EE	1	Event Enrollment 1
EE	2	Event Enrollment 2 writable
FIL	1	File
FIL	2	File 2 writable
GRP	1	Group 1
GRP	2	Group 2 writable
LP	1	Loop 1
LP	2	Loop 2 writable
MI	1	Multi State Input 1
MI	2	Multi State Input 2 writable
MO	1	Multi State Output 1
MO	2	Multi State Output 2 writable
NC	1	Notification Class
NC	2	Notification Class 2 writable
PR	1	Program 1
PR	2	Program 2 writable
SCHED	1	Schedule 1
SCHED	2	Schedule 2 writable
AVG	1	Averaging 1
AVG	2	Averaging 2 writable
MV	1	Multi State Value 1
MV	2	Multi State Value 2 writable
TLOG	1	Trend Log 1
TLOG	2	Trend Log 2 Writable
LSP	1	LifeSafetyPoint 1
LSP	2	LifeSafetyPoint 2 with many properti
LSZ	1	LifeSafetyZone 1
LSZ	2	LifeSafetyZone 2 writable
ACC	1	Accumulator 1

Analog Output

Standard | Proprietary

Object Identifier: AnalogOutput 2

Object Name: Analog Output 2 writable

Object Type: AnalogOutput

Description: Analog Output many properties writable

Tags: 2 Element(e)

Profile Name: 50-analog-output profile

Profile Location:

Property List: 43 Element(e)

Present Value: 30.00

Units: [98, Percent]

Status Flags: InAlarm Fault Overridden Out of Servi

Reliability: [5, ShortedLoop]

Reliability Evalu. Inhibit:

Out Of Service:

Interface Value: 0,00

Notification Class: 1

Time Delay: 2

Time Delay Normal: 1

Notify Type: [0, Alarm]

Event Msg. Texts Config: Off-Normal Fault Normal

Event Enable: Off-Normal Fault Normal

Event Detection Enable:

Event Algorithm Inhibit:

Event Alg. Inhibit Ref: (BinaryOutput,1), PresentValue, -

Event State: [1, Fault]

Off-Normal	Fault	Normal
Event Time Stamps: (Thursday,17-Oc	(Monday,04-Mar	0
Event Message Texts: TO_OFFNORMA	TO_FAULT	TO_NORMAL
Acked Transitions: <input type="checkbox"/> Off-Normal	<input checked="" type="checkbox"/> Fault	<input checked="" type="checkbox"/> Normal

Auditable Operations: 12 Element(e) in Verwendung

Audit Level: [1, AuditAll]

Audit Priority Filter: 3 Element(e) in Verwendung

High Limit: 80.00

Low Limit: 20.00

Deadband: 1,00

Limit Enable: Low Limit Enable High Limit Enable

Min Pres Value: 0,00

Max Pres Value: 100,00

Device Type: Device Type

Resolution: 0,10

COV Increment: 1,50

Value Source: [0] 0AFADA1DBB10

Last Command Time: (Monday,25-November-2019),09:27:59.00

Priority Array: 3 Element(e) in Verwendung

Relinquish Default: 50,00

Current Command Prio: 3

Value Source Array: 2 Element(e) in Verwendung

Command Time Array: 2 Element(e) in Verwendung

Kommmandieren

Daten geladen: 04.05.2020 17:29:06 Autom. aktualisieren alle (sek): 30 Senden Write Priority [8, ManualOperator (8)]

Object Type Audit Log (ALOG)

Alle Netzwerke >> Gerät 4194302 >> AuditLog2

Objekte 125 Objekte gefunden

Obj. Type	Inst.-Nr	Objekt Name
CSV	2	Characterstring Value 2 writable
DPV	1	Date Pattern Value 1
DPV	2	Date Pattern Value 2
DV	1	Date Value 1
DV	2	Date Value 2 writable
DTPV	1	Datetime Pattern Value 1
DTPV	2	Datetime Pattern Value 2 writable
DTV	1	Datetime Value 1
DTV	2	Datetime Value 2
IV	1	Integer Value 1
IV	2	Integer Value 2 writable
LAV	1	Large Analog Value 1
LAV	2	Large Analog Value 2
OSV	1	Octetstring Value 1
OSV	2	Octetstring Value 2
PIV	1	Positive Integer Value 1
PIV	2	Positive Integer Value 2 writable
TPV	1	Time Pattern Value 1
TPV	2	Time Pattern Value 2 writable
TV	1	Time Value 1
TV	2	Time Value 2 writable
NFW	1	Notification Forwarder 1
NFW	2	Notification Forwarder 1 writable
AE	1	Alert Enrollment 1
AE	2	Alert Enrollment 2 writable
CNL	1	Channel 1
CNL	2	Channel 2 writable
LO	1	Lighting Output 1
LO	2	Lighting Output 2 writable
BLO	1	Binary Lighting Output 1
BLO	2	Binary Lighting Output 2
NP	1	Network Port 1
NP	2	Network Port 2
NP	3	Network Port 3
EG	1	Elevator Group 1
EG	2	Elevator Group 2
ESC	1	Escalator 1
ESC	2	Escalator 2 Writable
LIFT	1	Lift 1
LIFT	2	Lift 2
STAG	1	Staging 1
STAG	2	Staging 2 Writable
ALOG	1	Audit Log 1
ALOG	2	Audit Log 2 Writable
AREP	1	Audit Reporter 1
AREP	2	Audit Reporter 2 Writable

Audit Log

Standard Proprietary

Object Identifier: AuditLog 2

Object Name: Audit Log 2 Writable

Object Type: AuditLog

Description: Audit Log 2 writable

Tags: 0 Element(e)

Profile Name: 50-audit-log profile

Profile Location:

Property List: 26 Element(e)

Status Flags: InAlarm Fault Overridden Out of Servi

Reliability: [0, NoFaultDetected]

Reliability Evalu. Inhibit:

Notification Class: 1

Notify Type: [1, Event]

Event Msg. Texts Config: Off-Normal Fault Normal

Event Enable: Off-Normal Fault Normal

Event Detection Enable:

Auditable Operations: 15 Element(e) in Verwendung

Audit Level: [3, Default]

Event State: [0, Normal]

Event Time Stamps: 0 (Thursday,17-Oct) (Wednesday,18-

Event Message Texts: TO_FAULT TO_NORMAL

Acked Transitions: Off-Normal Fault Normal

Enable:

Member Of: 4194302, (Device,4194302)

Delete On Forward:

Issue Confr. Notifications:

Buffer Size: 1000

Record Count: 1000

Total Record Count: 278546

Daten geladen: 04.05.2020 17:49:22 Autom. aktualisieren alle (sek): 30 Senden

Object Type Audit Reporter (AREP)

Alle Netzwerke >> Gerät 4194302 >> AuditReporter2

Objekte 125 Objekte gefunden

Obj. Type	Inst.-Nr	Objekt Name
CSV	2	Characterstring Value 2 writable
DPV	1	Date Pattern Value 1
DPV	2	Date Pattern Value 2
DV	1	Date Value 1
DV	2	Date Value 2 writable
DTPV	1	Datetime Pattern Value 1
DTPV	2	Datetime Pattern Value 2 writable
DTV	1	Datetime Value 1
DTV	2	Datetime Value 2
IV	1	Integer Value 1
IV	2	Integer Value 2 writable
LAV	1	Large Analog Value 1
LAV	2	Large Analog Value 2
OSV	1	Octetstring Value 1
OSV	2	Octetstring Value 2
PIV	1	Positive Integer Value 1
PIV	2	Positive Integer Value 2 writable
TPV	1	Time Pattern Value 1
TPV	2	Time Pattern Value 2 writable
TV	1	Time Value 1
TV	2	Time Value 2 writable
NFW	1	Notification Forwarder 1
NFW	2	Notification Forwarder 1 writable
AE	1	Alert Enrollment 1
AE	2	Alert Enrollment 2 writable
CNL	1	Channel 1
CNL	2	Channel 2 writable
LO	1	Lighting Output 1
LO	2	Lighting Output 2 writable
BLO	1	Binary Lighting Output 1
BLO	2	Binary Lighting Output 2
NP	1	Network Port 1
NP	2	Network Port 2
NP	3	Network Port 3
EG	1	Elevator Group 1
EG	2	Elevator Group 2
ESC	1	Escalator 1
ESC	2	Escalator 2 Writable
LIFT	1	Lift 1
LIFT	2	Lift 2
STAG	1	Staging 1
STAG	2	Staging 2 Writable
ALOG	1	Audit Log 1
ALOG	2	Audit Log 2 Writable
AREP	1	Audit Reporter 1
AREP	2	Audit Reporter 2 Writable

Audit Reporter

Standard Proprietary

Object Identifier: AuditReporter 2

Object Name: Audit Reporter 2 Writable

Object Type: AuditReporter

Description: Audit Reporting 2 writable

Tags: 0 Element(e)

Profile Name: 50-audit-reporter profile

Profile Location:

Property List: 24 Element(e)

Notification Class: 2

Notify Type: [1, Event]

Event Msg. Texts Config: TO_OFFNORMAL TO_FAULT TO_NORMAL

Event Enable: Off-Normal Fault Normal

Event Detection Enable:

Auditable Operations: 16 Element(e) in Verwendung

Audit Level: [1, AuditAll]

Audit Priority Filter: 2 Element(e) in Verwendung

Send Now:

Status Flags: InAlarm Fault Overridden Out of Servi

Reliability: [0, NoFaultDetected]

Reliability Evalu. Inhibit:

Event State: [0, Normal]

	Off-Normal	Fault	Normal
Event Time Stamps	0	0	0
Event Message Texts			
Acked Transitions	<input checked="" type="checkbox"/>	<input checked="" type="checkbox"/>	<input checked="" type="checkbox"/>

Audit Source Reporter:

Issue Confir. Notifications:

Monitored Objects: ([1] (analog-value,2),[1] (binary-value,2))

Maximum Send Delay: 10

Datens geladen: 04.05.2020 17:50:08 Autom. aktualisieren alle (sek): 30

Object Type Binary Input (BI)

Alle Netzwerke >> Gerät 4194302 >> BinaryInput2

Objekte 125 Objekte gefunden

Obj. Type	Inst.-Nr	Objekt Name
AI	1	Analog Input 1 writable
AI	2	Analog Input 2
AI	3	Analog Input 3
AO	1	Analog Output
AO	2	Analog Output 2 writable
AV	1	Analog Value 1 writable
AV	2	Analog Value 2
BI	1	Binary Input 1
BI	2	Binary Input 2 writable
BO	1	Binary Output 1
BO	2	Binary Output 2 writable
BV	1	Binary Value 1
BV	2	Binary Value 2 writable
CAL	1	Calendar 1
CAL	2	Calendar 2 with many properties writ
CMD	1	Command Object 1
CMD	2	Command Object 2 writable
DEV	4194302	Dummyserver for TD
EE	1	Event Enrollment 1
EE	2	Event Enrollment 2 writable
FIL	1	File
FIL	2	File 2 writable
GRP	1	Group 1
GRP	2	Group 2 writable
LP	1	Loop 1
LP	2	Loop 2 writable
MI	1	Multi State Input 1
MI	2	Multi State Input 2 writable
MO	1	Multi State Output 1
MO	2	Multi State Output 2 writable
NC	1	Notification Class
NC	2	Notification Class 2 writable
PR	1	Program 1
PR	2	Program 2 writable
SCHED	1	Schedule 1
SCHED	2	Schedule 2 writable
AVG	1	Averaging 1
AVG	2	Averaging 2 writable
MV	1	Multi State Value 1
MV	2	Multi State Value 2 writable
TLOG	1	Trend Log 1
TLOG	2	Trend Log 2 Writable
LSP	1	LifeSafetyPoint 1
LSP	2	LifeSafetyPoint 2 with many propertie
LSZ	1	LifeSafetyZone 1
LSZ	2	LifeSafetyZone 2 writable
ACC	1	Accumulator 1

Binary Input

Standard | Proprietary

Object Identifier: BinaryInput 2

Object Name: Binary Input 2 writable

Object Type: BinaryInput

Description: Binary Input with many properties writable

Tags: 0 Element(e)

Profile Name: 50-binary-input profile

Profile Location:

Property List: 35 Element(e)

Present Value: [0, Aus]

Status Flags: InAlarm Fault Overridden Out of Servi

Reliability: [0, NoFaultDetected]

Reliability Evalu. Inhibit:

Out Of Service:

Inactive Text: Aus

Active Text: Ein

Interface Value: [1, Ein]

Notification Class: 1

Time Delay: 2

Time Delay Normal: 1

Notify Type: [1, Event]

Event Msg. Texts Config: Off-Normal Fault Normal

Event Enable: Off-Normal Fault Normal

Event Detection Enable:

Event Algorithm Inhibit:

Event Alg. Inhibit Ref: (BinaryOutput,1), PresentValue, -

Auditable Operations: 16 Element(e) in Verwendung

Audit Level: [3, Default]

Change State Time: 14.11.2019 Donnerstag / 12:18:11.00

Change State Count: 47

Time State Count Reset: 12.12.2012 Mittwoch / 23:22:17.68

Event State: [0, Normal]

Event Time Stamps:

Off-Normal	Fault	Normal
0	0	0

Event Message Texts:

Acked Transitions: Off-Normal Fault Normal

Alarm Value: [1, Ein]

Polarity: [0, Normal]

Device Type: Device Type

Elapsed Active Time: 10

Time Active Time Reset: 13.12.2012 Donnerstag / 23:22:17.68

Daten geladen: 04.05.2020 17:29:34

Autom. aktualisieren alle (sek): 30

Senden

Object Type Binary Lighting Output (BLO)

Alle Netzwerke >> Gerät 4194302 >> BinaryLightingOutput2

Objekte 125 Objekte gefunden

Obj. Type	Inst.-Nr	Objekt Name
CSV	2	Characterstring Value 2 writable
DPV	1	Date Pattern Value 1
DPV	2	Date Pattern Value 2
DV	1	Date Value 1
DV	2	Date Value 2 writable
DTPV	1	Datetime Pattern Value 1
DTPV	2	Datetime Pattern Value 2 writable
DTV	1	Datetime Value 1
DTV	2	Datetime Value 2
IV	1	Integer Value 1
IV	2	Integer Value 2 writable
LAV	1	Large Analog Value 1
LAV	2	Large Analog Value 2
OSV	1	Octetstring Value 1
OSV	2	Octetstring Value 2
PIV	1	Positive Integer Value 1
PIV	2	Positive Integer Value 2 writable
TPV	1	Time Pattern Value 1
TPV	2	Time Pattern Value 2 writable
TV	1	Time Value 1
TV	2	Time Value 2 writable
NFW	1	Notification Forwarder 1
NFW	2	Notification Forwarder 2 writable
AE	1	Alert Enrollment 1
AE	2	Alert Enrollment 2 writable
CNL	1	Channel 1
CNL	2	Channel 2 writable
LO	1	Lighting Output 1
LO	2	Lighting Output 2 writable
BLO	1	Binary Lighting Output 1
BLO	2	Binary Lighting Output 2
NP	1	Network Port 1
NP	2	Network Port 2
NP	3	Network Port 3
EG	1	Elevator Group 1
EG	2	Elevator Group 2
ESC	1	Escalator 1
ESC	2	Escalator 2 Writable
LIFT	1	Lift 1
LIFT	2	Lift 2
STAG	1	Staging 1
STAG	2	Staging 2 Writable
ALOG	1	Audit Log 1
ALOG	2	Audit Log 2 Writable
AREP	1	Audit Reporter 1
AREP	2	Audit Reporter 2 Writable

Binary Lighting Output

Standard Proprietary

Object Identifier: BinaryLightingOutput 2

Object Name: Binary Lighting Output 2

Object Type: BinaryLightingOutput

Description: Description Binary Lighting Output Writable

Tags: 0 Element(e)

Profile Name: 50-binary-lighting-output profile

Profile Location:

Property List: 37 Element(e)

Present Value: [0, Off]

Status Flags: InAlarm Fault Overridden Out of Servi

Reliability: [0, NoFaultDetected]

Reliability Evalu. Inhibit:

Out Of Service:

Egress Active:

Notification Class: 2

Notify Type: [0, Alarm]

Event Msg. Texts Config: Off-Normal Fault Normal

Event Enable: Off-Normal Fault Normal

Event Detection Enable:

Event-State: [Off-Normal Fault Normal]

Event Time Stamps:

Event Message Texts:

Acked Transitions: Off-Normal Fault Normal

Auditable Operations: 16 Element(e) in Verwendung

Audit Level: [1, AuditAll]

Audit Priority Filter: 2 Element(e) in Verwendung

Feedback Value: [1, On]

Value Source: (0) 0AFA0A1DB810

Last Command Time: (Monday,04-May-2020),11:22:24.00

Polarity: [1, Reverse]

Power: 0,30

Blink Warn Enable:

Egress Time: 700

Priority Array: 2 Element(e) in Verwendung

Relinquish Default: [0, Off]

Current Command Prio: 8

Value Source Array: 1 Element(e) in Verwendung

Command Time Array: 1 Element(e) in Verwendung

Kommandieren

Strike Count: 2

Time Of Str. Count Res.: 17.05.2019 Freitag / 15:11:11.10

Elapsed Active Time: 2900

Time Active Time Reset: 25.01.2018 Donnerstag / 11:28:18.10

Daten geladen: 04.05.2020 17:44:03 Autom. aktualisieren alle (sek): 30

Object Type Binary Output (BO)

Alle Netzwerke >> Gerät 4194302 >> BinaryOutput2

Objekte 125 Objekte gefunden

Obj. Type	Inst.-Nr	Objekt Name
AI	1	Analog Input 1 writable
AI	2	Analog Input 2
AI	3	Analog Input 3
AO	1	Analog Output
AO	2	Analog Output 2 writable
AV	1	Analog Value 1 writable
AV	2	Analog Value 2
BI	1	Binary Input 1
BI	2	Binary Input 2 writable
BO	1	Binary Output 1
BO	2	Binary Output 2 writable
BV	1	Binary Value 1
BV	2	Binary Value 2 writable
CAL	1	Calendar 1
CAL	2	Calendar 2 with many properties writ
CMD	1	Command Object 1
CMD	2	Command Object 2 writable
DEV	4194302	Dummyserver for TD
EE	1	Event Enrollment 1
EE	2	Event Enrollment 2 writable
FIL	1	File
FIL	2	File 2 writable
GRP	1	Group 1
GRP	2	Group 2 writable
LP	1	Loop 1
LP	2	Loop 2 writable
MI	1	Multi State Input 1
MI	2	Multi State Input 2 writable
MO	1	Multi State Output 1
MO	2	Multi State Output 2 writable
NC	1	Notification Class
NC	2	Notification Class 2 writable
PR	1	Program 1
PR	2	Program 2 writable
SCHED	1	Schedule 1
SCHED	2	Schedule 2 writable
AVG	1	Averaging 1
AVG	2	Averaging 2 writable
MV	1	Multi State Value 1
MV	2	Multi State Value 2 writable
TLOG	1	Trend Log 1
TLOG	2	Trend Log 2 Writable
LSP	1	LifeSafetyPoint 1
LSP	2	LifeSafetyPoint 2 with many properti
LSZ	1	LifeSafetyZone 1
LSZ	2	LifeSafetyZone 2 writable
ACC	1	Accumulator 1

Binary Output

Standard | Proprietary

Object Identifier: BinaryOutput 2

Object Name: Binary Output 2 writable

Object Type: BinaryOutput

Description: Binary Output with many properties writable

Tags: 2 Element(e)

Profile Name: 50-binary-output profile

Profile Location:

Property List: 45 Element(e)

Present Value: [0, Off]

Status Flags: InAlarm Fault Overridden Out of Servi

Reliability: [0, NoFaultDetected]

Reliability Evalu. Inhibit:

Out Of Service:

Inactive Text: Off

Active Text: On

Interface Value: [1, On]

Notification Class: 1

Time Delay: 2

Time Delay Normal: 1

Notify Type: [1, Event]

Event Msg. Texts Config: Off-Normal Fault Normal

Event Enable: Off-Normal Fault Normal

Event Detection Enable:

Event Algorithm Inhibit:

Event Alg. Inhibit Ref: (BinaryOutput,1), PresentValue, -

Event State: [0, Normal]

Off-Normal	Fault	Normal
Event Time Stamps: (Friday,31-Janua 0		(Wednesday,04-
Event Message Texts:		

Acked Transitions: Off-Normal Fault Normal

Feedback Value: [0, Off]

Value Source: 4194302,(Staging,2)

Last Command Time: (Friday,22-November-2019),15:35:18.00

Auditable Operations: 16 Element(e) in Verwendung

Audit Level: [3, Default]

Audit Priority Filter: 2 Element(e) in Verwendung

Priority Array: 2 Element(e) in Verwendung

Relinquish Default: [0, Off]

Current Command Prio: 8

Value Source Array: 2 Element(e) in Verwendung

Command Time Array: 2 Element(e) in Verwendung

Kommandieren

Polarity: [0, Normal]

Device Type: Device Type

Minimum On Time: 1

Minimum Off Time: 1

Elapsed Active Time: 106

Time Active Time Reset: 13.12.2012 Donnerstag / 23:22:17.68

Change State Time: 22.11.2019 Freitag / 15:35:18.00

Change State Count: 68

Time State Count Reset: 12.12.2012 Mittwoch / 23:22:17.68

Write Priority: [8, ManualOperator (8)]

Daten geladen: 04.05.2020 17:30:04 Autom. aktualisieren alle (sek): 30 Senden

Object Type Calendar (CAL)

Alle Netzwerke >> Gerät 4194302 >> Calendar2

Objekte 125 Objekte gefunden

Obj. Type	Inst.-Nr	Objekt Name
AI	1	Analog Input 1 writable
AI	2	Analog Input 2
AI	3	Analog Input 3
AO	1	Analog Output
AO	2	Analog Output 2 writable
AV	1	Analog Value 1 writable
AV	2	Analog Value 2
BI	1	Binary Input 1
BI	2	Binary Input 2 writable
BO	1	Binary Output 1
BO	2	Binary Output 2 writable
BV	1	Binary Value 1
BV	2	Binary Value 2 writable
CAL	1	Calendar 1
CAL	2	Calendar 2 with many properties writ
CMD	1	Command Object 1
CMD	2	Command Object 2 writable
DEV	4194302	Dummyserver for TD
EE	1	Event Enrollment 1
EE	2	Event Enrollment 2 writable
FIL	1	File
FIL	2	File 2 writable
GRP	1	Group 1
GRP	2	Group 2 writable
LP	1	Loop 1
LP	2	Loop 2 writable
MI	1	Multi State Input 1
MI	2	Multi State Input 2 writable
MO	1	Multi State Output 1
MO	2	Multi State Output 2 writable
NC	1	Notification Class
NC	2	Notification Class 2 writable
PR	1	Program 1
PR	2	Program 2 writable
SCHED	1	Schedule 1
SCHED	2	Schedule 2 writable
AVG	1	Averaging 1
AVG	2	Averaging 2 writable
MV	1	Multi State Value 1
MV	2	Multi State Value 2 writable
TLOG	1	Trend Log 1
TLOG	2	Trend Log 2 Writable
LSP	1	LifeSafetyPoint 1
LSP	2	LifeSafetyPoint 2 with many properti
LSZ	1	LifeSafetyZone 1
LSZ	2	LifeSafetyZone 2 writable
ACC	1	Accumulator 1

Calendar

Standard Proprietary

Object Identifier: Calendar 2

Object Name: Calendar 2 with many properties writable

Object Type: Calendar

Description: Calendar

Tags: 1 Element(e)

Profile Name: 50-calendar profile

Profile Location:

Property List: 8 Element(e)

Present Value:

Auditable Operations: 16 Element(e) in Verwendung

Audit Level: [3, Default]

Date List

Tag	Monat	Jahr	Wochentag	End Tag	End Monat	End Jahr	End Wochentag	Eintragstyp
*	6	*	Dienstag					Date
18	1	2018	Donnerstag	19	1	2018	Freitag	DateRange
*	*		Montag					WeekAndDay
*	gerade Monate	*						WeekAndDay
letzte 7 Tage des Monats	1	*						WeekAndDay

Object Type Characterstring Value (CSV)

Alle Netzwerke >> Gerät 4194302 >> CharacterstringValue2

Objekte 125 Objekte gefunden

Obj. Type	Inst.-Nr	Objekt Name
CSV	2	Characterstring Value 2 writable
DPV	1	Date Pattern Value 1
DPV	2	Date Pattern Value 2
DV	1	Date Value 1
DV	2	Date Value 2 writable
DTPV	1	Datetime Pattern Value 1
DTPV	2	Datetime Pattern Value 2 writable
DTV	1	Datetime Value 1
DTV	2	Datetime Value 2
IV	1	Integer Value 1
IV	2	Integer Value 2 writable
LAV	1	Large Analog Value 1
LAV	2	Large Analog Value 2
OSV	1	Octetstring Value 1
OSV	2	Octetstring Value 2
PIV	1	Positive Integer Value 1
PIV	2	Positive Integer Value 2 writable
TPV	1	Time Pattern Value 1
TPV	2	Time Pattern Value 2 writable
TV	1	Time Value 1
TV	2	Time Value 2 writable
NFW	1	Notification Forwarder 1
NFW	2	Notification Forwarder 1 writable
AE	1	Alert Enrollment 1
AE	2	Alert Enrollment 2 writable
CNL	1	Channel 1
CNL	2	Channel 2 writable
LO	1	Lighting Output 1
LO	2	Lighting Output 2 writable
BLO	1	Binary Lighting Output 1
BLO	2	Binary Lighting Output 2
NP	1	Network Port 1
NP	2	Network Port 2
NP	3	Network Port 3
EG	1	Elevator Group 1
EG	2	Elevator Group 2
ESC	1	Escalator 1
ESC	2	Escalator 2 Writable
LIFT	1	Lift 1
LIFT	2	Lift 2
STAG	1	Staging 1
STAG	2	Staging 2 Writable
ALOG	1	Audit Log 1
ALOG	2	Audit Log 2 Writable
AREP	1	Audit Reporter 1
AREP	2	Audit Reporter 2 Writable

CharacterString Value

Standard Proprietary

Object Identifier: CharacterstringValue 2

Object Name: Characterstring Value 2 writable

Object Type: CharacterstringValue

Description: Some Description with many properties writable

Tags: 0 Element(e)

Profile Name: 50-characterstring-value profile

Profile Location:

Property List: 34 Element(e)

Present Value: Some String Value

Status Flags: InAlarm Fault Overridden Out of Servi

Reliability: [0, NoFaultDetected]

Reliability Evalu. Inhibit:

Out Of Service:

Notification Class: 2

Time Delay: 10

Time Delay Normal: 8

Notify Type: [0, Alarm]

Event Msg. Texts Config: Off-Normal Fault Normal

Event Enable: Off-Normal Fault Normal

Event Detection Enable:

Event Algorithm Inhibit:

Event Alg. Inhibit Ref: (BinaryOutput,1), PresentValue, -

Event State: [0, Normal]

Event Time Stamps:

Event Message Texts:

Acked Transitions: Off-Normal Fault Normal

Alarm Values: 2 Element(e)

Fault Values: 4 Element(e)

Value Source: ---

Last Command Time: (Monday,04-May-2020),11:22:24.00

Auditable Operations: 16 Element(e) in Verwendung

Audit Level: [1, AuditAll]

Audit Priority Filter: 2 Element(e) in Verwendung

Priority Array: 1 Element(e) in Verwendung

Relinquish Default: No-Text

Current Command Prio: 16

Value Source Array: 0 Element(e) in Verwendung

Command Time Array: 0 Element(e) in Verwendung

Kommandieren

Daten geladen: 04.05.2020 17:54:54 Autom. aktualisieren alle (sek): 30 Senden Write Priority [8, ManualOperator (8)]

Object Type Device (DEV)

Alle Netzwerke >> Gerät 4194302 >> Device4194302

Objekte 125 Objekte gefunden

Obj. Type	Inst.-Nr	Objekt Name
AI	1	Analog Input 1 writable
AI	2	Analog Input 2
AI	3	Analog Input 3
AO	1	Analog Output
AO	2	Analog Output 2 writable
AV	1	Analog Value 1 writable
AV	2	Analog Value 2
BI	1	Binary Input 1
BI	2	Binary Input 2 writable
BO	1	Binary Output 1
BO	2	Binary Output 2 writable
BV	1	Binary Value 1
BV	2	Binary Value 2 writable
CAL	1	Calendar 1
CAL	2	Calendar 2 with many properties writ
CMD	1	Command Object 1
CMD	2	Command Object 2 writable
DEV	4194302	Dummyserver for TD
EE	1	Event Enrollment 1
EE	2	Event Enrollment 2 writable
FIL	1	File
FIL	2	File 2 writable
GRP	1	Group 1
GRP	2	Group 2 writable
LP	1	Loop 1
LP	2	Loop 2 writable
MI	1	Multi State Input 1
MI	2	Multi State Input 2 writable
MO	1	Multi State Output 1
MO	2	Multi State Output 2 writable
NC	1	Notification Class
NC	2	Notification Class 2 writable
PR	1	Program 1
PR	2	Program 2 writable
SCHED	1	Schedule 1
SCHED	2	Schedule 2 writable
AVG	1	Averaging 1
AVG	2	Averaging 2 writable
MV	1	Multi State Value 1
MV	2	Multi State Value 2 writable
TLOG	1	Trend Log 1
TLOG	2	Trend Log 2 Writable
LSP	1	LifeSafetyPoint 1
LSP	2	LifeSafetyPoint 2 with many properti
LSZ	1	LifeSafetyZone 1
LSZ	2	LifeSafetyZone 2 writable
ACC	1	Accumulator 1

Device

Standard Proprietary

Object Identifier: Device 4194302

Object Name: Dummyserver for TD

Object Type: Device

Description: IUT Template Conformance Tests

Serial Number: SN 12345678/AB/0

Device UUID: FC-08-D9-94-E6-A5-40-91-AB-AA-80-1D-92-01-85-

Tags: 2 Element(e)

Profile Name: 50-device profile

Profile Location: bacnet://this/file.1

Deployed Profile Loc:

Property List: 70 Element(e)

Location: Testlabor

System Status: [0, Operational]

Status Flags: InAlarm Fault Overridden Out of Servi

Reliability: [0, NoFaultDetected]

Reliability Evalu. Inhibit:

Database Revision: 1

Device Addr. Binding: 0 Element(e)

Active COV Subscrip.: 0

Active COV Multi. Subscr.: 0

Active-VT-Sessions:

Last Restart Reason: [0, RestartReasonUnknown]

Time Of Dev. Restart: [2] ((*-*-*),***)

Notification Class: 1

Notify Type: [0, Alarm]

Event Msg. Texts Config: TO_OFFNORMAL TO_FAULT TO_NORMAL

Event Enable: Off-Normal Fault Normal

Event Detection Enable:

Auditable Operations: 13 Element(e) in Verwendung

Audit Level: [1, AuditAll]

Audit Notific. Recipient: NULL

Vendor Name: MBS GmbH

Vendor Identifier: 50

Model Name: Dummyserver Simulation

Firmware Revision: No Firmware

Appl. Software Vers.: No Application Software Version

Protocol Version: 1

Prot. Revision: 20

Prot. Services Supp.: 43 Element(e) in Verwendung

Prot. Obj. Types Supp.: 63 Element(e) in Verwendung

VT-Classes-Supp.:

Object List: 125 Element(e)

Struct. Object List: 2 Element(e)

Restart Notifi. Recip.: 0 Element(e)

Max APDU Length: 1476

Segm. Supported: [0, Both]

Max Segm. Accepted: 16

APDU Segm. Timeout: 2000

APDU Timeout: 3000

Num. Of APDU Retries: 5

Daten geladen: 04.05.2020 17:31:48 Autom. aktualisieren alle (sek): 30 Senden

Object Type Elevator Group (EG)

Alle Netzwerke >> Gerät 4194302 >> ElevatorGroup2

Objekte 125 Objekte gefunden

Obj. Type	Inst.-Nr	Objekt Name
CSV	2	Characterstring Value 2 writable
DPV	1	Date Pattern Value 1
DPV	2	Date Pattern Value 2
DV	1	Date Value 1
DV	2	Date Value 2 writable
DTPV	1	Datetime Pattern Value 1
DTPV	2	Datetime Pattern Value 2 writable
DTV	1	Datetime Value 1
DTV	2	Datetime Value 2
IV	1	Integer Value 1
IV	2	Integer Value 2 writable
LAV	1	Large Analog Value 1
LAV	2	Large Analog Value 2
OSV	1	Octetstring Value 1
OSV	2	Octetstring Value 2
PIV	1	Positive Integer Value 1
PIV	2	Positive Integer Value 2 writable
TPV	1	Time Pattern Value 1
TPV	2	Time Pattern Value 2 writable
TV	1	Time Value 1
TV	2	Time Value 2 writable
NFW	1	Notification Forwarder 1
NFW	2	Notification Forwarder 1 writable
AE	1	Alert Enrollment 1
AE	2	Alert Enrollment 2 writable
CNL	1	Channel 1
CNL	2	Channel 2 writable
LO	1	Lighting Output 1
LO	2	Lighting Output 2 writable
BLO	1	Binary Lighting Output 1
BLO	2	Binary Lighting Output 2
NP	1	Network Port 1
NP	2	Network Port 2
NP	3	Network Port 3
EG	1	Elevator Group 1
EG	2	Elevator Group 2
ESC	1	Escalator 1
ESC	2	Escalator 2 Writable
LIFT	1	Lift 1
LIFT	2	Lift 2
STAG	1	Staging 1
STAG	2	Staging 2 Writable
ALOG	1	Audit Log 1
ALOG	2	Audit Log 2 Writable
AREP	1	Audit Reporter 1
AREP	2	Audit Reporter 2 Writable

Elevator Group

Standard Proprietary

Object Identifier: ElevatorGroup 2

Object Name: Elevator Group 2

Object Type: ElevatorGroup

Description: Elevator Group 2

Tags: 0 Element(e)

Profile Name: 50-elevator-group profile

Profile Location: 50-elevator-group location

Property List: 12 Element(e)

Machine Room ID: (IntegerValue,2)

Group ID: 2

Group Members: 2 Element(e)

Group Mode: [3, TwoWay]

Auditable Operations: 16 Element(e) in Verwendung

Audit Level: [1, AuditAll]

Landing Calls: ((2,[1] up,Floor 2))

Landing Call Control: (2,[1] up,Floor 2)

Daten geladen: 04.05.2020 17:45:31 Autom. aktualisieren alle (sek): 30 Senden

Object Type Escalator writeable (ESC)

Alle Netzwerke >> Gerat 4194302 >> Escalator2

Objekte 125 Objekte gefunden

Obj. Type	Inst.-Nr	Objekt Name
CSV	2	Characterstring Value 2 writable
DPV	1	Date Pattern Value 1
DPV	2	Date Pattern Value 2
DV	1	Date Value 1
DV	2	Date Value 2 writable
DTPV	1	Datetime Pattern Value 1
DTPV	2	Datetime Pattern Value 2 writable
DTV	1	Datetime Value 1
DTV	2	Datetime Value 2
IV	1	Integer Value 1
IV	2	Integer Value 2 writable
LAV	1	Large Analog Value 1
LAV	2	Large Analog Value 2
OSV	1	Octetstring Value 1
OSV	2	Octetstring Value 2
PIV	1	Positive Integer Value 1
PIV	2	Positive Integer Value 2 writable
TPV	1	Time Pattern Value 1
TPV	2	Time Pattern Value 2 writable
TV	1	Time Value 1
TV	2	Time Value 2 writable
NFW	1	Notification Forwarder 1
NFW	2	Notification Forwarder 1 writable
AE	1	Alert Enrollment 1
AE	2	Alert Enrollment 2 writable
CNL	1	Channel 1
CNL	2	Channel 2 writable
LO	1	Lighting Output 1
LO	2	Lighting Output 2 writable
BLO	1	Binary Lighting Output 1
BLO	2	Binary Lighting Output 2
NP	1	Network Port 1
NP	2	Network Port 2
NP	3	Network Port 3
EG	1	Elevator Group 1
EG	2	Elevator Group 2
ESC	1	Escalator 1
ESC	2	Escalator 2 Writable
LIFT	1	Lift 1
LIFT	2	Lift 2
STAG	1	Staging 1
STAG	2	Staging 2 Writable
ALOG	1	Audit Log 1
ALOG	2	Audit Log 2 Writable
AREP	1	Audit Reporter 1
AREP	2	Audit Reporter 2 Writable

Escalator

Standard Proprietary

Object Identifier: Escalator 2

Object Name: Escalator 2 Writable

Object Type: Escalator

Description: Escalator 2 writable

Tags: 0 Element(e)

Profile Name: 50-escalator profile

Profile Location:

Property List: 33 Element(e)

Escalator Mode: [0, Unknown]

Operation Direction: [0, Unknown]

Passenger Alarm:

Status Flags: InAlarm Fault Overridden Out of Servi

Reliability: [23, FaultsListed]

Reliability Evalu. Inhibit:

Out Of Service:

Power Mode:

Notification Class: 2

Time Delay: 5

Time Delay Normal: 2

Notify Type: [0, Alarm] 2

Event Msg. Texts Config: TO_OFFNORMA TO_FAULT TO_NORMAL

Event Enable: Off-Normal Fault Normal

Event Detection Enable:

Event Algorithm Inhibit:

Event Alg. Inhibit Ref: (BinaryOutput,1), PresentValue, -

Auditable Operations: 16 Element(e) in Verwendung

Audit Level: [1, AuditAll]

Elevator Group: (ElevatorGroup,2)

Group ID: 2

Installation ID: 4

Event State: [1, Fault]

Off-Normal	Fault	Normal
Event Time Stamps: 0	(Monday,04-Mar)	0
Event Message Texts:	TO_FAULT	

Acked Transitions: Off-Normal Fault Normal

Fault Signals: 2 Element(e)

Energy Meter: 0,00

Energy Meter Ref.: -, (AnalogValue,2)

Daten geladen: 04.05.2020 17:46:03 Autom. aktualisieren alle (sek): 30

Object Type Eventlog writable (ELOG)

Alle Netzwerke >> Gerät 4194302 >> Eventlog2

Objekte 125 Objekte gefunden

Obj. Type	Inst.-Nr	Objekt Name
CMD	1	Command Object 1
CMD	2	Command Object 2 writable
DEV	4194302	Dummyserver for TD
EE	1	Event Enrollment 1
EE	2	Event Enrollment 2 writable
FIL	1	File
FIL	2	File 2 writable
GRP	1	Group 1
GRP	2	Group 2 writable
LP	1	Loop 1
LP	2	Loop 2 writable
MI	1	Multi State Input 1
MI	2	Multi State Input 2 writable
MO	1	Multi State Output 1
MO	2	Multi State Output 2 writable
NC	1	Notification Class
NC	2	Notification Class 2 writable
PR	1	Program 1
PR	2	Program 2 writable
SCHED	1	Schedule 1
SCHED	2	Schedule 2 writable
AVG	1	Averaging 1
AVG	2	Averaging 2 writable
MV	1	Multi State Value 1
MV	2	Multi State Value 2 writable
TLOG	1	Trend Log 1
TLOG	2	Trend Log 2 Writable
LSP	1	LifeSafetyPoint 1
LSP	2	LifeSafetyPoint 2 with many propertie
LSZ	1	LifeSafetyZone 1
LSZ	2	LifeSafetyZone 2 writable
ACC	1	Accumulator 1
ACC	2	Accumulator 2
PC	1	Pulse Converter 1
PC	2	Pulse Converter 2 writable
ELOG	1	EventLog 1
ELOG	2	EventLog 2 writable
GGRP	1	Global Group 1
GGRP	2	Global Group 1 writable
TLOGM	1	TrendLogMultiple
TLOGM	2	TrendLogMultiple 2 writable
LC	1	LoadControl 1
LC	2	LoadControl 2 writable
SV	1	StructuredView 1
SV	2	StructuredView 2 writable
AD	1	AccessDoor
AD	2	AccessDoor 2 writable

Event Log

Standard Proprietary

Object Identifier: Eventlog 2

Object Name: EventLog 2 writable

Object Type: Eventlog

Description: all event notifications

Tags: 0 Element(e)

Profile Name: 50-event-log profile

Profile Location:

Property List: 31 Element(e)

Status Flags: InAlarm Fault Overridden Out of Servi

Reliability: [0, NoFaultDetected]

Reliability Evalu. Inhibit:

Notification Class: 2

Notify Type: [1, Event]

Event Msg. Texts Config: Off-Normal Fault Normal

Event Enable: Off-Normal Fault Normal

Event Detection Enable:

Event Algorithm Inhibit:

Event Alg. Inhibit Ref: (BinaryOutput,1), PresentValue, -

Auditable Operations: 16 Element(e) in Verwendung

Audit Level: [3, Default]

Event State: [0, Normal]

Event Time Stamps: Off-Normal Fault Normal

Event Message Texts: TO_OFFNORMA TO_FAULT TO_NORMAL

Acked Transitions: Off-Normal Fault Normal

Notification Threshold: 20

Records Since Notifi.: 4

Last Notify Record: 9429

Enable:

Start Time: **** / ****

Stop Time: **** / ****

Stop When Full:

Buffer Size: 250

Record Count: 250

Total Record Count: 9433

Logbuffer

Daten geladen: 04.05.2020 17:40:00 Autom. aktualisieren alle (sek): 30

Object Type File writable (FIL)

Alle Netzwerke >> Gerät 4194302 >> File2

Objekte 125 Objekte gefunden

Obj. Type	Inst.-Nr	Objekt Name
AI	1	Analog Input 1 writable
AI	2	Analog Input 2
AI	3	Analog Input 3
AO	1	Analog Output
AO	2	Analog Output 2 writable
AV	1	Analog Value 1 writable
AV	2	Analog Value 2
BI	1	Binary Input 1
BI	2	Binary Input 2 writable
BO	1	Binary Output 1
BO	2	Binary Output 2 writable
BV	1	Binary Value 1
BV	2	Binary Value 2 writable
CAL	1	Calendar 1
CAL	2	Calendar 2 with many properties writ
CMD	1	Command Object 1
CMD	2	Command Object 2 writable
DEV	4194302	Dummyserver for TD
EE	1	Event Enrollment 1
EE	2	Event Enrollment 2 writable
FIL	1	File
FIL	2	File 2 writable
GRP	1	Group 1
GRP	2	Group 2 writable
LP	1	Loop 1
LP	2	Loop 2 writable
MI	1	Multi State Input 1
MI	2	Multi State Input 2 writable
MO	1	Multi State Output 1
MO	2	Multi State Output 2 writable
NC	1	Notification Class
NC	2	Notification Class 2 writable
PR	1	Program 1
PR	2	Program 2 writable
SCHED	1	Schedule 1
SCHED	2	Schedule 2 writable
AVG	1	Averaging 1
AVG	2	Averaging 2 writable
MV	1	Multi State Value 1
MV	2	Multi State Value 2 writable
TLOG	1	Trend Log 1
TLOG	2	Trend Log 2 Writable
LSP	1	LifeSafetyPoint 1
LSP	2	LifeSafetyPoint 2 with many properti
LSZ	1	LifeSafetyZone 1
LSZ	2	LifeSafetyZone 2 writable
ACC	1	Accumulator 1

File

Standard Proprietary

Object Identifier: File 2

Object Name: File 2 writable

Object Type: File

Description: File Stream Record

Tags: 1 Element(e)

Profile Name: 50-file profile

Profile Location:

Property List: 13 Element(e)

File Type: Empty File

File Size: 0

Modification Date: 18.12.2019 Mittwoch / 14:29:38.44

Archive:

Read Only:

File Access Method: [1. StreamAccess]

Record Count: 0

Lesen Schreiben

Auditable Operations: 16 Element(e) in Verwendung

Audit Level: [3, Default]

Daten geladen: 04.05.2020 17:32:45

Autom. aktualisieren alle (sek): 30

Senden

Object Type Lift (LIFT)

Alle Netzwerke >> Gerät 4194302 >> Lift2

Objekte 125 Objekte gefunden

Obj. Type	Inst.-Nr	Objekt Name
CSV	2	Characterstring Value 2 writable
DPV	1	Date Pattern Value 1
DPV	2	Date Pattern Value 2
DV	1	Date Value 1
DV	2	Date Value 2 writable
DTPV	1	Datetime Pattern Value 1
DTPV	2	Datetime Pattern Value 2 writable
DTV	1	Datetime Value 1
DTV	2	Datetime Value 2
IV	1	Integer Value 1
IV	2	Integer Value 2 writable
LAV	1	Large Analog Value 1
LAV	2	Large Analog Value 2
OSV	1	Octetstring Value 1
OSV	2	Octetstring Value 2
PIV	1	Positive Integer Value 1
PIV	2	Positive Integer Value 2 writable
TPV	1	Time Pattern Value 1
TPV	2	Time Pattern Value 2 writable
TV	1	Time Value 1
TV	2	Time Value 2 writable
NFW	1	Notification Forwarder 1
NFW	2	Notification Forwarder 1 writable
AE	1	Alert Enrollment 1
AE	2	Alert Enrollment 2 writable
CNL	1	Channel 1
CNL	2	Channel 2 writable
LO	1	Lighting Output 1
LO	2	Lighting Output 2 writable
BLO	1	Binary Lighting Output 1
BLO	2	Binary Lighting Output 2
NP	1	Network Port 1
NP	2	Network Port 2
NP	3	Network Port 3
EG	1	Elevator Group 1
EG	2	Elevator Group 2
ESC	1	Escalator 1
ESC	2	Escalator 2 Writable
LIFT	1	Lift 1
LIFT	2	Lift 2
STAG	1	Staging 1
STAG	2	Staging 2 Writable
ALOG	1	Audit Log 1
ALOG	2	Audit Log 2 Writable
AREP	1	Audit Reporter 1
AREP	2	Audit Reporter 2 Writable

Lift

Standard Proprietary

Object Identifier: Lift 2

Object Name: Lift 2

Object Type: Lift

Description: Lift 2 writable

Tags: 0 Element(e)

Profile Name: 50-lift profile

Profile Location:

Property List: 49 Element(e)

Notification Class: 2

Time Delay: 5

Time Delay Normal: 2

Notify Type: [0, Alarm]

Event Msg. Texts Config:

Off-Normal	Fault	Normal
TO_OFFNORMAL	TO_FAULT	TO_NORMAL

Event Enable: Off-Normal Fault Normal

Event Detection Enable:

Event Algorithm Inhibit:

Event Alg. Inhibit Ref: (BinaryOutput,1), PresentValue, -

Auditable Operations: 16 Element(e) in Verwendung

Audit Level: [1, AuditAll]

Group ID: 2

Installation ID: 4

Elevator Group: (ElevatorGroup,2)

Higher Deck: (proprietary-1023,0)

Lower Deck: (proprietary-1023,0)

Floor Text: 3 Element(e)

Car Door Text: 1 Element(e)

Assigned Landing Calls: (((2,down),(3,stopped)),((1,up),(2,down),(3,stopped)))

Passenger Alarm:

Status Flags: InAlarm Fault Overridden Out of Service

Reliability: [23, FaultsListed]

Reliability Evalu. Inhibit:

Out Of Service:

Event State: [1, Fault]

Event Time Stamps	Off-Normal	Fault	Normal
	0	(Monday,04-Mar)	0

Event Message Texts:

TO_FAULT

Acked Transitions: Off-Normal Fault Normal

Car Position: 3

Car Moving Direction: [2, Stopped]

Next Stopping Floor: 3

Car Drive Status: [0, Unknown]

Landing Door Status: (((1.opened),(2.closed),(3.unknown)),(1.opened),(2.closed))

Fault Signals: 2 Element(e)

Energy Meter: 0,00

Energy Meter Ref: -, (AnalogValue,2)

Car Load: 555,60

Car Load Units: [39, Kilograms]

Car Door Status: 1 Element(e)

Daten geladen: 04.05.2020 17:46:48 Autom. aktualisieren alle (sek): 30 Senden

Object Type Lighting Output writable (LO)

Alle Netzwerke >> Gerät 4194302 >> LightingOutput2

Objekte 125 Objekte gefunden

Obj. Type	Inst.-Nr	Objekt Name
CSV	2	Characterstring Value 2 writable
DPV	1	Date Pattern Value 1
DPV	2	Date Pattern Value 2
DV	1	Date Value 1
DV	2	Date Value 2 writable
DTPV	1	Datetime Pattern Value 1
DTPV	2	Datetime Pattern Value 2 writable
DTV	1	Datetime Value 1
DTV	2	Datetime Value 2
IV	1	Integer Value 1
IV	2	Integer Value 2 writable
LAV	1	Large Analog Value 1
LAV	2	Large Analog Value 2
OSV	1	Octetstring Value 1
OSV	2	Octetstring Value 2
PIV	1	Positive Integer Value 1
PIV	2	Positive Integer Value 2 writable
TPV	1	Time Pattern Value 1
TPV	2	Time Pattern Value 2 writable
TV	1	Time Value 1
TV	2	Time Value 2 writable
NFW	1	Notification Forwarder 1
NFW	2	Notification Forwarder 1 writable
AE	1	Alert Enrollment 1
AE	2	Alert Enrollment 2 writable
CNL	1	Channel 1
CNL	2	Channel 2 writable
LO	1	Lighting Output 1
LO	2	Lighting Output 2 writable
BLO	1	Binary Lighting Output 1
BLO	2	Binary Lighting Output 2
NP	1	Network Port 1
NP	2	Network Port 2
NP	3	Network Port 3
EG	1	Elevator Group 1
EG	2	Elevator Group 2
ESC	1	Escalator 1
ESC	2	Escalator 2 Writable
LIFT	1	Lift 1
LIFT	2	Lift 2
STAG	1	Staging 1
STAG	2	Staging 2 Writable
ALOG	1	Audit Log 1
ALOG	2	Audit Log 2 Writable
AREP	1	Audit Reporter 1
AREP	2	Audit Reporter 2 Writable

Lighting Output

Standard
Proprietary

Object Identifier: LightingOutput 2

Object Name: Lighting Output 2 writable

Object Type: LightingOutput

Description: Description Lighting W

Tags: 0 Element(e)

Profile Name: 50-lighting profile

Profile Location:

Property List: 36 Element(e)

Present Value: 20.00

Status Flags: InAlarm Fault Overridden Out of Servi

Reliability: [0, NoFaultDetected]

Reliability Evalu. Inhibit:

Out Of Service:

Notification-Class: 0

Notify-Type:

Event-Msg-Texts-Config:

Event-Enable: Off-Normal Fault Normal

Event-Detection-Enable:

Event-State:

Event-Time-Stamps:

Event-Message-Texts:

Acked-Transitions: Off-Normal Fault Normal

Auditable Operations: 16 Element(e) in Verwendung

Audit Level: [1, AuditAll]

Audit Priority Filter: 2 Element(e) in Verwendung

COV Increment: 1.50

Priority Array: 1 Element(e) in Verwendung

Relinquish Default: 40.00

Current Command Prio.: 16

Value Source Array: 0 Element(e) in Verwendung

Command Time Array: 0 Element(e) in Verwendung

Kommandieren

Tracking Value: 20,00

Default Fade Time: 500

Default Ramp Rate: 3.50

Default Step Increment: 1,00

Lighting Command: (none,90,000000,10,000000,1,000000,200,15)

Lighting Cmd. Def. Prio.: [8, ManualOperator]

In Progress: [0, Idle]

Blink Warn Enable:

Egress Time: 600

Egress Active:

Transition: [1, Fade]

Feedback Value: 0,00

Min Actual Value: 2,00

Max Actual Value: 80,00

Power: 0,20

Instantaneous Power: 0,15

Daten geladen: 04.05.2020 17:42:40 Autom. aktualisieren alle (sek): 30 Senden Write Priority [8, ManualOperator (8)]

Object Type Multistate Input writable (MI)

Alle Netzwerke >> Gerät 4194302 >> MultistateInput2

Objekte 125 Objekte gefunden

Obj. Type	Inst.-Nr	Objekt Name
AI	1	Analog Input 1 writable
AI	2	Analog Input 2
AI	3	Analog Input 3
AO	1	Analog Output
AO	2	Analog Output 2 writable
AV	1	Analog Value 1 writable
AV	2	Analog Value 2
BI	1	Binary Input 1
BI	2	Binary Input 2 writable
BO	1	Binary Output 1
BO	2	Binary Output 2 writable
BV	1	Binary Value 1
BV	2	Binary Value 2 writable
CAL	1	Calendar 1
CAL	2	Calendar 2 with many properties writ
CMD	1	Command Object 1
CMD	2	Command Object 2 writable
DEV	4194302	Dummyserver for TD
EE	1	Event Enrollment 1
EE	2	Event Enrollment 2 writable
FIL	1	File
FIL	2	File 2 writable
GRP	1	Group 1
GRP	2	Group 2 writable
LP	1	Loop 1
LP	2	Loop 2 writable
MI	1	Multi State Input 1
MI	2	Multi State Input 2 writable
MO	1	Multi State Output 1
MO	2	Multi State Output 2 writable
NC	1	Notification Class
NC	2	Notification Class 2 writable
PR	1	Program 1
PR	2	Program 2 writable
SCHED	1	Schedule 1
SCHED	2	Schedule 2 writable
AVG	1	Averaging 1
AVG	2	Averaging 2 writable
MV	1	Multi State Value 1
MV	2	Multi State Value 2 writable
TLOG	1	Trend Log 1
TLOG	2	Trend Log 2 Writable
LSP	1	LifeSafetyPoint 1
LSP	2	LifeSafetyPoint 2 with many propertie
LSZ	1	LifeSafetyZone 1
LSZ	2	LifeSafetyZone 2 writable
ACC	1	Accumulator 1

Multistate Input

Standard Proprietary

Object Identifier: MultistateInput 2

Object Name: Multi State Input 2 writable

Object Type: MultistateInput

Description: Multi State Input

Tags: 0 Element(e)

Profile Name: 50-multi-state-input profile

Profile Location: []

Property List: 30 Element(e)

Present Value: 1 => Off

Status Flags: InAlarm Fault Overridden Out of Servi

Reliability: [0, NoFaultDetected]

Reliability Evalu. Inhibit:

Out Of Service:

Number Of States: 3

State Text: 3 Element(e)

Interface Value: []

Notification Class: 1

Time Delay: 2

Time Delay Normal: 1

Notify Type: [0, Alarm]

Event Msg. Texts Config: TO_OFFNORMAL TO_FAULT TO_NORMAL

Event Enable: Off-Normal Fault Normal

Event Detection Enable:

Event Algorithm Inhibit:

Event Alg. Inhibit Ref: (BinaryValue.2), PresentValue, -

Event State: [0, Normal]

	Off-Normal	Fault	Normal
Event Time Stamps	0	(Monday,06-Apr	(Monday,06-Apr
Event Message Texts		TO_FAULT	TO_NORMAL
Acked Transitions	<input checked="" type="checkbox"/> Off-Normal	<input checked="" type="checkbox"/> Fault	<input checked="" type="checkbox"/> Normal

Alarm Values: 1 Element(e)

Fault Values: 1 Element(e)

Auditable Operations: 16 Element(e) in Verwendung

Audit Level: [3, Default]

Daten geladen: 04.05.2020 17:33:32 Autom. aktualisieren alle (sek): 30

Object Type Multi State writable (MO)

Alle Netzwerke >> Gerät 4194302 >> MultistateOutput2

Objekte 125 Objekte gefunden

Obj. Type	Inst.-Nr	Objekt Name
AI	1	Analog Input 1 writable
AI	2	Analog Input 2
AI	3	Analog Input 3
AO	1	Analog Output
AO	2	Analog Output 2 writable
AV	1	Analog Value 1 writable
AV	2	Analog Value 2
BI	1	Binary Input 1
BI	2	Binary Input 2 writable
BO	1	Binary Output 1
BO	2	Binary Output 2 writable
BV	1	Binary Value 1
BV	2	Binary Value 2 writable
CAL	1	Calendar 1
CAL	2	Calendar 2 with many properties writ
CMD	1	Command Object 1
CMD	2	Command Object 2 writable
DEV	4194302	Dummyserver for TD
EE	1	Event Enrollment 1
EE	2	Event Enrollment 2 writable
FIL	1	File
FIL	2	File 2 writable
GRP	1	Group 1
GRP	2	Group 2 writable
LP	1	Loop 1
LP	2	Loop 2 writable
MI	1	Multi State Input 1
MI	2	Multi State Input 2 writable
MO	1	Multi State Output 1
MO	2	Multi State Output 2 writable
NC	1	Notification Class
NC	2	Notification Class 2 writable
PR	1	Program 1
PR	2	Program 2 writable
SCHED	1	Schedule 1
SCHED	2	Schedule 2 writable
AVG	1	Averaging 1
AVG	2	Averaging 2 writable
MV	1	Multi State Value 1
MV	2	Multi State Value 2 writable
TLOG	1	Trend Log 1
TLOG	2	Trend Log 2 Writable
LSP	1	LifeSafetyPoint 1
LSP	2	LifeSafetyPoint 2 with many propertie
LSZ	1	LifeSafetyZone 1
LSZ	2	LifeSafetyZone 2 writable
ACC	1	Accumulator 1

Multistate Output

Standard Proprietary

Object Identifier: MultistateOutput 2

Object Name: Multi State Output 2 writable

Object Type: MultistateOutput

Description: Multi State Output with many properties writable

Tags: 0 Element(e)

Profile Name: 50-multi-state-output profile

Profile Location:

Property List: 37 Element(e)

Present Value: 2 => On_Low

Status Flags: InAlarm Fault Overridden Out of Servi

Reliability: [25, MultiStateOutOfRange]

Reliability Evalu. Inhibit:

Out Of Service:

Number Of States: 4

State Text: 4 Element(e)

Interface Value:

Notification Class: 1

Time Delay: 2

Time Delay Normal: 1

Notify Type: [0, Alarm]

Event Msg. Txs Config: Off-Normal Fault Normal

Event Enable: Off-Normal Fault Normal

Event Detection Enable:

Event Algorithm Inhibit:

Event Alg. Inhibit Ref: (BinaryValue.2), PresentValue, -

Event State: [1, Fault]

Event Time Stamps: 0 (Friday,22-Nov-2019 0)

Event Message Texts: TO_FAULT

Acked Transitions: Off-Normal Fault Normal

Feedback Value: 1 => Off

Value Source: 132455,(Device,132455)

Last Command Time: (Friday,22-November-2019),15:19:49.00

Auditable Operations: 16 Element(e) in Verwendung

Audit Level: [3, Default]

Audit Priority Filter: 2 Element(e) in Verwendung

Device Type: Device Type

Priority Array: 2 Element(e) in Verwendung

Relinquish Default: 1 => Off

Current Command Prio: 8

Value Source Array: 1 Element(e) in Verwendung

Command Time Array: 1 Element(e) in Verwendung

Kommandieren

Daten geladen: 04.05.2020 17:34:19 Autom. aktualisieren alle (sek: 30) Write Priority [8, ManualOperator (8)]

Object Type Notification Class writable (NC)

Alle Netzwerke >> Gerät 4194302 >> NotificationClass2

Objekte 125 Objekte gefunden

Obj. Type	Inst.-Nr	Objekt Name
AI	1	Analog Input 1 writable
AI	2	Analog Input 2
AI	3	Analog Input 3
AO	1	Analog Output
AO	2	Analog Output 2 writable
AV	1	Analog Value 1 writable
AV	2	Analog Value 2
BI	1	Binary Input 1
BI	2	Binary Input 2 writable
BO	1	Binary Output 1
BO	2	Binary Output 2 writable
BV	1	Binary Value 1
BV	2	Binary Value 2 writable
CAL	1	Calendar 1
CAL	2	Calendar 2 with many properties writ
CMD	1	Command Object 1
CMD	2	Command Object 2 writable
DEV	4194302	Dummyserver for TD
EE	1	Event Enrollment 1
EE	2	Event Enrollment 2 writable
FIL	1	File
FIL	2	File 2 writable
GRP	1	Group 1
GRP	2	Group 2 writable
LP	1	Loop 1
LP	2	Loop 2 writable
MI	1	Multi State Input 1
MI	2	Multi State Input 2 writable
MO	1	Multi State Output 1
MO	2	Multi State Output 2 writable
NC	1	Notification Class
NC	2	Notification Class 2 writable
PR	1	Program 1
PR	2	Program 2 writable
SCHED	1	Schedule 1
SCHED	2	Schedule 2 writable
AVG	1	Averaging 1
AVG	2	Averaging 2 writable
MV	1	Multi State Value 1
MV	2	Multi State Value 2 writable
TLOG	1	Trend Log 1
TLOG	2	Trend Log 2 Writable
LSP	1	LifeSafetyPoint 1
LSP	2	LifeSafetyPoint 2 with many propertie
LSZ	1	LifeSafetyZone 1
LSZ	2	LifeSafetyZone 2 writable
ACC	1	Accumulator 1

Notification Class

Standard Proprietary

Object Identifier: NotificationClass 2

Object Name: Notification Class 2 writable

Object Type: NotificationClass

Description: Notification Class

Tags: 0 Element(e)

Profile Name: 50-notification-class profile

Profile Location:

Property List: 21 Element(e)

Notification Class: 1

Notify Type: [0, Alarm]

Event Msg. Texts Config: Off-Normal Fault Normal

Event Enable: Off-Normal Fault Normal

Event Detection Enable:

Auditable Operations: 16 Element(e) in Verwendung

Audit Level: [3, Default]

Status Flags: InAlarm Fault Overridden Out of Servi

Reliability: [0, NoFaultDetected]

Reliability Evalu. Inhibit:

Priority: 3 Element(e)

Ack Required: Off-Normal Fault Normal

Recipient List: 4 Element(e)

Event State: [0, Normal]

Off-Normal	Fault	Normal
Event Time Stamps: 0	0	0
Event Message Texts:		

Acked Transitions: Off-Normal Fault Normal

Object Type Schedule writable (SCHED)

Alle Netzwerke >> Gerät 4194302 >> Schedule2

Objekte 125 Objekte gefunden

Obj. Type	Inst.-Nr	Objekt Name
AI	1	Analog Input 1 writable
AI	2	Analog Input 2
AI	3	Analog Input 3
AO	1	Analog Output
AO	2	Analog Output 2 writable
AV	1	Analog Value 1 writable
AV	2	Analog Value 2
BI	1	Binary Input 1
BI	2	Binary Input 2 writable
BO	1	Binary Output 1
BO	2	Binary Output 2 writable
BV	1	Binary Value 1
BV	2	Binary Value 2 writable
CAL	1	Calendar 1
CAL	2	Calendar 2 with many properties writ
CMD	1	Command Object 1
CMD	2	Command Object 2 writable
DEV	4194302	Dummyserver for TD
EE	1	Event Enrollment 1
EE	2	Event Enrollment 2 writable
FIL	1	File
FIL	2	File 2 writable
GRP	1	Group 1
GRP	2	Group 2 writable
LP	1	Loop 1
LP	2	Loop 2 writable
MI	1	Multi State Input 1
MI	2	Multi State Input 2 writable
MO	1	Multi State Output 1
MO	2	Multi State Output 2 writable
NC	1	Notification Class 1
NC	2	Notification Class 2 writable
PR	1	Program 1
PR	2	Program 2 writable
SCHED	1	Schedule 1
SCHED	2	Schedule 2 writable
AVG	1	Averaging 1
AVG	2	Averaging 2 writable
MV	1	Multi State Value 1
MV	2	Multi State Value 2 writable
TLOG	1	Trend Log 1
TLOG	2	Trend Log 2 Writable
LSP	1	LifeSafetyPoint 1
LSP	2	LifeSafetyPoint 2 with many propertie
LSZ	1	LifeSafetyZone 1
LSZ	2	LifeSafetyZone 2 writable
ACC	1	Accumulator 1

Schedule

Weekly Schedule | Exception Schedule | Standard | Proprietary

Weekly Schedule

Wochentag	Zeit	Wert
Montag	00:00:00	0,50
Montag	01:00:10	10,50
Montag	02:00:20	20,50
Montag	03:00:30	30,50
Montag	04:00:40	40,50
Dienstag	00:00:00	0,50
Dienstag	01:00:10	10,50
Dienstag	02:00:20	20,50
Dienstag	03:00:30	30,50
Dienstag	04:00:40	40,50
Mittwoch	00:00:00	0,50
Mittwoch	01:00:10	10,50
Mittwoch	02:00:20	20,50
Mittwoch	03:00:30	30,50
Mittwoch	04:00:40	40,50
Donnerstag	00:00:00	0,50
Donnerstag	01:00:10	10,50
Donnerstag	02:00:20	20,50
Donnerstag	03:00:30	30,50
Donnerstag	04:00:40	40,50

Zeitprogramm für Kw 19 | 04.05.2020 - 10.05.2020

Effective Schedule

Zeit	00	01	02	03	04	05	06	07	08	09	10	11	12	13	14	15	16	17	18	19	20	21	22	23	
Mo																									
Di																									
Mi																									
Do																									
Fr																									
Sa																									
So																									

Weekly Schedule

Zeit	00	01	02	03	04	05	06	07	08	09	10	11	12	13	14	15	16	17	18	19	20	21	22	23	
Mo																									
Di																									
Mi																									
Do																									
Fr																									
Sa																									
So																									

Daten geladen: 04.05.2020 17:35:42 | Autom. aktualisieren alle (sek): 30 | Senden

Object Type Staging writable (STAG)

Alle Netzwerke >> Gerät 4194302 >> Staging2

Objekte 125 Objekte gefunden

Obj. Type	Inst.-Nr	Objekt Name
CSV	2	Characterstring Value 2 writable
DPV	1	Date Pattern Value 1
DPV	2	Date Pattern Value 2
DV	1	Date Value 1
DV	2	Date Value 2 writable
DTPV	1	Datetime Pattern Value 1
DTPV	2	Datetime Pattern Value 2 writable
DTV	1	Datetime Value 1
DTV	2	Datetime Value 2
IV	1	Integer Value 1
IV	2	Integer Value 2 writable
LAV	1	Large Analog Value 1
LAV	2	Large Analog Value 2
OSV	1	Octetstring Value 1
OSV	2	Octetstring Value 2
PIV	1	Positive Integer Value 1
PIV	2	Positive Integer Value 2 writable
TPV	1	Time Pattern Value 1
TPV	2	Time Pattern Value 2 writable
TV	1	Time Value 1
TV	2	Time Value 2 writable
NFW	1	Notification Forwarder 1
NFW	2	Notification Forwarder 1 writable
AE	1	Alert Enrollment 1
AE	2	Alert Enrollment 2 writable
CNL	1	Channel 1
CNL	2	Channel 2 writable
LO	1	Lighting Output 1
LO	2	Lighting Output 2 writable
BLO	1	Binary Lighting Output 1
BLO	2	Binary Lighting Output 2
NP	1	Network Port 1
NP	2	Network Port 2
NP	3	Network Port 3
EG	1	Elevator Group 1
EG	2	Elevator Group 2
ESC	1	Escalator 1
ESC	2	Escalator 2 Writable
LIFT	1	Lift 1
LIFT	2	Lift 2
STAG	1	Staging 1
STAG	2	Staging 2 Writable
ALOG	1	Audit Log 1
ALOG	2	Audit Log 2 Writable
AREP	1	Audit Reporter 1
AREP	2	Audit Reporter 2 Writable

Staging

Standard Proprietary

Object Identifier: Staging 2

Object Name: Staging 2 Writable

Object Type: Staging

Description: Stage Object writable

Tags: 0 Element(e)

Profile Name: 50-staging profile

Profile Location:

Property List: 31 Element(e)

Notification Class: 2

Notify Type: [1, Event]

Event Msg. Texts Config: TO_OFFNORMAL TO_FAULT TO_NORMAL

Event Enable: Off-Normal Fault Normal

Event Detection Enable:

Auditable Operations: 16 Element(e) in Verwendung

Audit Level: [1, AuditAll]

Min Pres Value: 39,50

Max Pres Value: 88,60

COV Increment: 0,55

Present Value: 50,20

Units: [188, NewtonsPerMeter]

Present Stage: 2

Status Flags: InAlarm Fault Overridden Out of Servi

Reliability: [0, NoFaultDetected]

Reliability Evalu. Inhibit:

Out Of Service:

Event State: [0, Normal]

Event Time Stamps: 0 (Friday,24-Janua) (Friday,24-Janua)

Event Message Texts: TO_FAULT TO_NORMAL

Acked Transitions: Off-Normal Fault Normal

Stages: ((40.000000,(T,T,F),0.500000),(66.599998,(T,F,F),0.5)

Stage Names: 3 Element(e)

Value Source: 4194302.(Staging,2)

Target References: 3 Element(e)

Priority For Writing: [8, ManualOperator]

Default Present Value: 50,20

Daten geladen: 04.05.2020 17:48:31 Autom. aktualisieren alle (sek): 30 Senden

Object Type Timer writable (TM)

Alle Netzwerke >> Gerät 4194302 >> Timer2

Objekte 125 Objekte gefunden

Obj. Type	Inst.-Nr	Objekt Name
LSZ	2	LifeSafetyZone 2 writable
ACC	1	Accumulator 1
ACC	2	Accumulator 2
PC	1	Pulse Converter 1
PC	2	Pulse Converter 2 writable
ELOG	1	EventLog 1
ELOG	2	EventLog 2 writable
GGRP	1	Global Group 1
GGRP	2	Global Group 1 writable
TLOGM	1	TrendLogMultiple
TLOGM	2	TrendLogMultiple 2 writable
LC	1	LoadControl 1
LC	2	LoadControl 2 writable
SV	1	StructuredView 1
SV	2	StructuredView 2 writable
AD	1	AccessDoor
AD	2	AccessDoor 2 writable
TM	1	Timer 1
TM	2	Timer 2 writable
AC	1	Access Credential 1
AC	2	Access Credential 2 writable
AP	1	Access Point 1
AP	2	Access Point 2 writable
AR	1	Access Rights 1
AR	2	Access Rights 2 writable
AU	1	Access User 1
AU	2	Access User 2 writable
AZ	1	Access Zone 1
AZ	2	Access Zone 2
CD	1	Credential Data Input
CD	2	Credential Data Input 2 writable
BSV	1	Bitstring Value 1
BSV	2	Bitstring Value 2
CSV	1	Characterstring Value 1
CSV	2	Characterstring Value 2 writable
DPV	1	Date Pattern Value 1
DPV	2	Date Pattern Value 2
DV	1	Date Value 1
DV	2	Date Value 2 writable
DTPV	1	Datetime Pattern Value 1
DTPV	2	Datetime Pattern Value 2 writable
DTV	1	Datetime Value 1
DTV	2	Datetime Value 2
IV	1	Integer Value 1
IV	2	Integer Value 2 writable
LAV	1	Large Analog Value 1
LAV	2	Large Analog Value 2

Timer

Standard Proprietary

Object Identifier: Timer 2

Object Name: Timer 2 writable

Object Type: Timer

Description: Timer with many properties writable

Tags: 0 Element(e)

Profile Name: 50-timer profile

Profile Location:

Property List: 37 Element(e)

Notification Class: 2

Time Delay: 2

Time Delay Normal: 3

Notify Type: [0, Alarm]

Event Msg. Texts Config: TO_OFFNORMAL TO_FAULT TO_NORMAL

Event Enable: Off-Normal Fault Normal

Event Detection Enable:

Event Algorithm Inhibit:

Event Alg. Inhibit Ref: (BinaryOutput,1), PresentValue, -

Auditable Operations: 16 Element(e) in Verwendung

Audit Level: [1, AuditAll]

Min Pres Value: 10

Max Pres Value: 110

Resolution: 10

Present Value: 0

Status Flags: InAlarm Fault Overridden Out of Servi

Timer State: [2, Expired]

Timer Running:

Update Time: 18.10.2019 Freitag / 11:44:30.00

Reliability: [0, NoFaultDetected]

Reliability Evalu. Inhibit:

Out Of Service:

Event State: [2, OffNormal]

	Off-Normal	Fault	Normal
Event Time Stamps (Monday,27-Jan)	0	0	0
Event Message Texts	TO_OFFNORMAL		
Acked Transitions	<input type="checkbox"/> Off-Normal	<input checked="" type="checkbox"/> Fault	<input checked="" type="checkbox"/> Normal

Alarm Values: 1 Element(e)

Last State Change: [4, RunningToExpired]

Expiry Time: 18.10.2019 Freitag / 11:52:30.00

Initial Timeout: 50

Default Timeout: 50

State-Change-Values:

List Of Obj. Prop. Refs: 1 Element(e)

Priority For Writing: [8, ManualOperator]

Daten geladen: 04.05.2020 17:40:47 Autom. aktualisieren alle (sek): 30 Senden

Object Type Trendlog writable (TLOG)

Alle Netzwerke >> Gerät 4194302 >> Trendlog2

Objekte 125 Objekte gefunden

Obj. Type	Inst.-Nr	Objekt Name
AO	1	Analog Output
AO	2	Analog Output 2 writable
AV	1	Analog Value 1 writable
AV	2	Analog Value 2
BI	1	Binary Input 1
BI	2	Binary Input 2 writable
BO	1	Binary Output 1
BO	2	Binary Output 2 writable
BV	1	Binary Value 1
BV	2	Binary Value 2 writable
CAL	1	Calendar 1
CAL	2	Calendar 2 with many properties writ
CMD	1	Command Object 1
CMD	2	Command Object 2 writable
DEV	4194302	Dummyserver for TD
EE	1	Event Enrollment 1
EE	2	Event Enrollment 2 writable
FIL	1	File
FIL	2	File 2 writable
GRP	1	Group 1
GRP	2	Group 2 writable
LP	1	Loop 1
LP	2	Loop 2 writable
MI	1	Multi State Input 1
MI	2	Multi State Input 2 writable
MO	1	Multi State Output 1
MO	2	Multi State Output 2 writable
NC	1	Notification Class
NC	2	Notification Class 2 writable
PR	1	Program 1
PR	2	Program 2 writable
SCHED	1	Schedule 1
SCHED	2	Schedule 2 writable
AVG	1	Averaging 1
AVG	2	Averaging 2 writable
MV	1	Multi State Value 1
MV	2	Multi State Value 2 writable
TLOG	1	Trend Log 1
TLOG	2	Trend Log 2 Writable
LSP	1	LifeSafetyPoint 1
LSP	2	LifeSafetyPoint 2 with many properti
LSZ	1	LifeSafetyZone 1
LSZ	2	LifeSafetyZone 2 writable
ACC	1	Accumulator 1
ACC	2	Accumulator 2
PC	1	Pulse Converter 1
PC	2	Pulse Converter 2 writable

Trend Log

Standard Proprietary

Object Identifier: Trendlog 2

Object Name: Trend Log 2 Writable

Object Type: Trendlog

Description: Trendlog

Tags: 0 Element(e)

Profile Name: 50-trend-log profile

Profile Location:

Property List: 37 Element(e)

Status Flags: InAlarm Fault Overridden Out of Servi

Reliability: [0, NoFaultDetected]

Reliability Evalu. Inhibit:

Notification Class: 2

Notify Type: [0, Alarm]

Event Msg. Texts Config: TO_OFFNORMAL TO_FAULT TO_NORMAL

Event Enable: Off-Normal Fault Normal

Event Detection Enable:

Event Algorithm Inhibit:

Event Alg. Inhibit Ref: (BinaryValue.2), PresentValue, -

Auditable Operations: 16 Element(e) in Verwendung

Audit Level: [3, Default]

Enable:

Start Time: ***/**/****

Stop Time: ***/**/****

Log Dev.Obj.Prop: -, (AnalogInput.2), PresentValue, -

Logging Type: [0, Polled]

Log Interval: 500

Align-Intervals:

Interval-Offset: 0

Event State: [0, Normal]

	Off-Normal	Fault	Normal
Event Time Stamps	0	0	(Monday,04-Mar)
Event Message Texts			TO_NORMAL
Acked Transitions	<input checked="" type="checkbox"/> Off-Normal	<input checked="" type="checkbox"/> Fault	<input type="checkbox"/> Normal

Notification Threshold: 10

Records Since Notifi.: 7

Last Notify Record: 274586

Trigger:

Stop When Full:

Buffer Size: 1000

Logbuffer

Record Count: 1000

Total Record Count: 274593

COV Resubscr. Interval: 3600

Client COV Incr.: 0,99

Daten geladen: 04.05.2020 17:39:01

Autom. aktualisieren alle (sek): 30

Senden



7 Product support

Manufacturer	MBS GmbH Römerstraße 15 47809 Krefeld
Telephone	+49 21 51 72 94-0
Fax	+49 21 51 72 94-50
E-Mail	support@mbs-solutions.de
Internet	www.mbs-solutions.de wiki.mbs-software.info
Service times	Monday to Friday: 8:30 to 12:00 Uhr 13:00 to 17:00 Uhr